

Managed Planet's Asset Center

www.managedplanet.com



Utilizing our powerful web and database aggregation engine, Managed Planet's Asset Center delivers agentless asset inventory matching or surpassing yesterday's agent-based scanning tools. No asset collection agent means lower deployment costs, zero client footprint and simpler upgrades. Agent compatibility is no longer a concern. Behind Asset Center is our agentless Discovery Services.

Once Discovery Services detects and scans network attached assets, Data Translation Services seamlessly combines SNMP, WMI, Manufacturer warranty and Reseller purchase history Web data to automatically inventory *any* network attached devices such as servers, workstations, laptops, printers, copiers, scanners, KVM's, routers, Power Modules, Blade Cabinets, IP phones, Management Cards, and more. Use barcode scanners to streamline the inventory of assets that do not connect to a network. Asset Center universally supports all PocketPC and USB barcode scanners from many vendors.

Managed Planet's Asset Center provides full reporting, querying, viewing and exporting of any data that resides in our central repository.

Asset Management in Three Acts

ACT ONE:

Data collected about assets from the moment of purchase - before you receive them

Because of our long-standing partnership with Computer Discount Warehouse (CDW), Asset Center captures purchase history data from the premium customer's web pages and translates it into an inventory "hyper" record that allows you to track the asset from the point of purchase to delivery.

Utilizing PocketPC or USB barcoding devices, Asset Center can record the delivery of the asset directly into its repository providing you complete asset control.

ACT TWO:

Data collected about assets after they have been deployed in your enterprise

Once a device attaches to the network, Asset Center communicates through industry standard protocols such as SNMP and WMI to add data to the already existing "Act One" record. The record is updated *without* an agent utilizing the Discovery Services Scheduling feature.

Utilizing barcoding devices, Asset Center can *update* the life cycle data about any device that is already "on the wire."

ACT THREE:

Data collected about assets when they have been removed from service

Utilizing barcoding devices, Asset Center can be used to mark an asset as "Out of service" and the central repository will be updated so those devices can be easily tracked when they are in that state. The same process can be used to mark an asset as "Back in Service" if desired.





Data Translation Services

The included Data Translation Services lets you customize your asset data in ways that would otherwise require you to hire a consultant or specialized programmer. You can structure your asset data how you want it, by adding, removing, and reorganizing data fields that are related to each other. This includes utilizing many external data sources such as Active Directory, Service Desk and Asset Applications with easy to use ODBC, LDAP and Business to Business connectors.

“Data Translation Services has many uses because it interfaces with anything. It doesn't look like a fast car, it is a fast car. There is absolutely no way the company could function without DTS. Data Translation Services has lot of defaults and is highly focused on inventory. SPSS installed it themselves - there is no need to bring Managed Planet in. “

“No brainer - buy it!”

Shawn Puckett
System Administrator
SPSS, Inc.
www.spss.com

Refining internal data

With Data Translation Services you can normalize inconsistent data such as variations of software vendor names and titles as well as format and organize fields and groups of fields in ways that match your processes. For example, if a serial number is in the wrong place in the record you can easily move that field to anywhere in the record. Data can also be reformatted and validated so that when you run a report, it will look the way you want it.

Connecting to External Data

After the Business to Business connector creates an “Act One” record based on your companies' system purchase information, additional data can be added from many other sources. For example, if your service desk team would like to know more about the user of a workstation or laptop, Data Translation Services can automatically add Active Directory user data to the inventory record for that device.

If there is any enterprise applications that need to have information about any of your devices, such as SAP, PeopleSoft, Remedy, etc, Data Translation Services can export data to those systems automatically. This serves to synchronize all the systems that connect to Asset Center.

Barcoding Forms

Data Translation Services provides a web based barcoding forms engine that is simple yet very powerful. The same barcoding forms can be run on a stand-alone barcode reader or on a PC with a USB barcode device. With it you can utilize our existing process templates or create your own. Since our barcode forms are web based they can be used on a wide range of devices.

Data Power Tools

With over twenty types of data translation rules, Asset Center has its own built in tool kit that allows you to do many tasks such as:

- Create calculated fields such as total disk space across multiple drives
- Translate date fields into “Days Since” fields for easy time queries
- Translate arcane data such Default Gateway=10.3.23.1 to information such as Location = “First Floor” or Preferred Server = “FSLAX01”.
- Convert Software Publisher data from “Microsoft, Inc.”, “Microsoft Corp.”, “Microsoft/Visio” to just “Microsoft”



Executive Reports - Management Ready

A key benefit of *web enhanced, enterprise connected and internally refined* asset data is the confidence that it brings when management wants to view an asset report you are responsible for. The Asset Center's Executive Reports are designed to deliver up a powerful presentation of the asset data without having to know a query language or even the underlying data structure. Available to every report is our web based report viewer that includes many time-saving features such as Organizations, Include/Exclude, Dynamic Grid and On Demand/Portal distribution.

The Executive reports include many pre-built templates that can be used to create hundreds of reports.

Exclusive to the Asset Center is the long standing *Managed Planet Report Club* which offers users of Asset Center up to three new report templates not already included in the product to be custom built by our programming staff after purchase - *for no extra cost!* Each report built by Managed Planet is shared by all the members of the club providing an ever growing library. Combine that with our intuitive report wizard and any reporting task is a breeze.

Quotes from our Customers:

"I just got the latest update from Managed Planet and it is exactly what I was looking for. I do not need to deal with Dell or any other manufacturer now, I can write my own front end, and it will track what the status of the machine is throughout its lifecycle. All we have to do is grab a Laptop, PDA, or any other device that can read barcodes and I don't have to be connected to the network."

"I've been very happy with the Managed Planet products and the speed at which development happens."

Ron Fowler

Information Technology Services
Lawrence Public Schools - USD497
<http://www.usd497.org>

"DTS is huge in software normalization, especially for those Adobe© and Microsoft© products that are not reliable in removing previous executables. DTS is key to correctly report to Adobe© and Microsoft about their licensing"

"Serial Number normalization is vital when rolling out new laptops. Even though 99% of new computers are coming from Dell© with different configurations the serial numbers are in different locations. There are all sorts of variances between machines, even those on the same purchase with theoretically the same configuration. The Web Import is really resonating with these folks in their laptop upgrade program. Dell© could not provide the purchase date or warranty info."

"The LDAP user data import function helps get rid of user compliance issues."

Sheila Lipe

Desktop Administrator
Conde Nast
New York, NY
www.condenast.com

"Desktop users did have administrative access, now every single user is associated in Active Directory with a cost centre and if software is installed it automatically moves that license to that user's cost centre. By using Managed Planet they were able to realize that out of 4,000 servers being tracked, 520 of them were not being used for anything. We love it and it has saved us many, many man hours!"

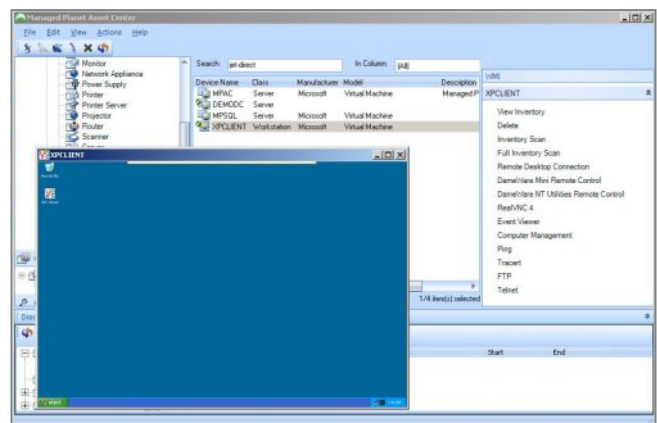
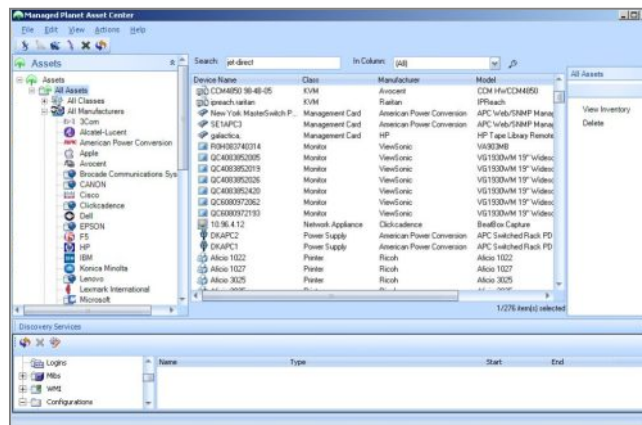
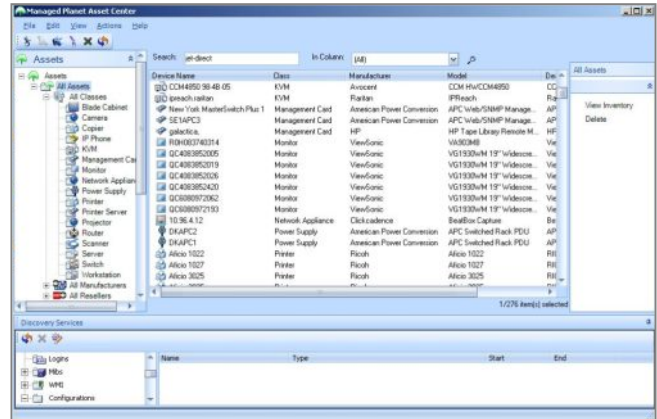
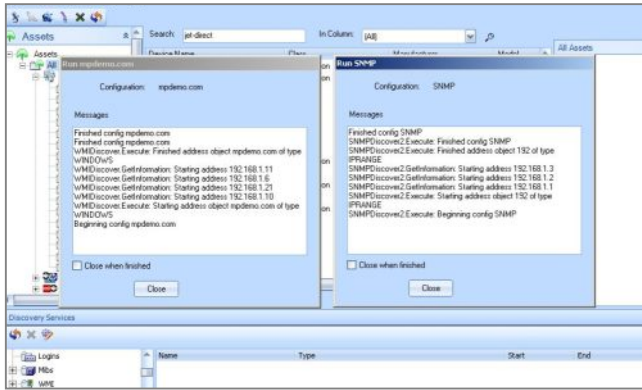
Jason Jordan

Desktop Administrator
Emerson Process Management
www.emersonprocess.com



Managed Planet's Asset Center

www.managedplanet.com





Requirements for Managed Planet Asset Center

CENTER SERVER

Software Requirements:

- Windows Server 2003 Sp2 Standard or Enterprise
- Windows Server 2003 R2 Standard or Enterprise
- .NET Framework 3.5 Sp1
- Windows Installer 4.5
- Powershell 1.0
- Internet Information Services 5 or 6
- Database Server (on the same server or separate)
- Microsoft SQL Server 2000 SP4, 2005 or 2008
- Mixed Security

Supported Directories:

- Microsoft Active Directory

Hardware Requirements:

- Processor: Dual Core 2GHz or higher
- Hard Drive: Minimum 5 GB of free disk space
- Memory: 4 GB

CONSOLE

Software Requirements:

- Windows XP Professional Sp2
- Windows Vista
- Windows Server 2003 Sp2 Standard or Enterprise
- Windows Server 2003 R2 Standard or Enterprise
- Net Framework 3.5 Sp1
- Windows Installer 4.5
- Powershell 1.0

Hardware Requirements:

- Processor: 2GHz or higher
- Hard Drive: 50 MB of free disk space
- Memory: 1 GB

SUPPORTED CLIENTS

Software Requirements:

- WMI
- SNMP 1, 2 or 3